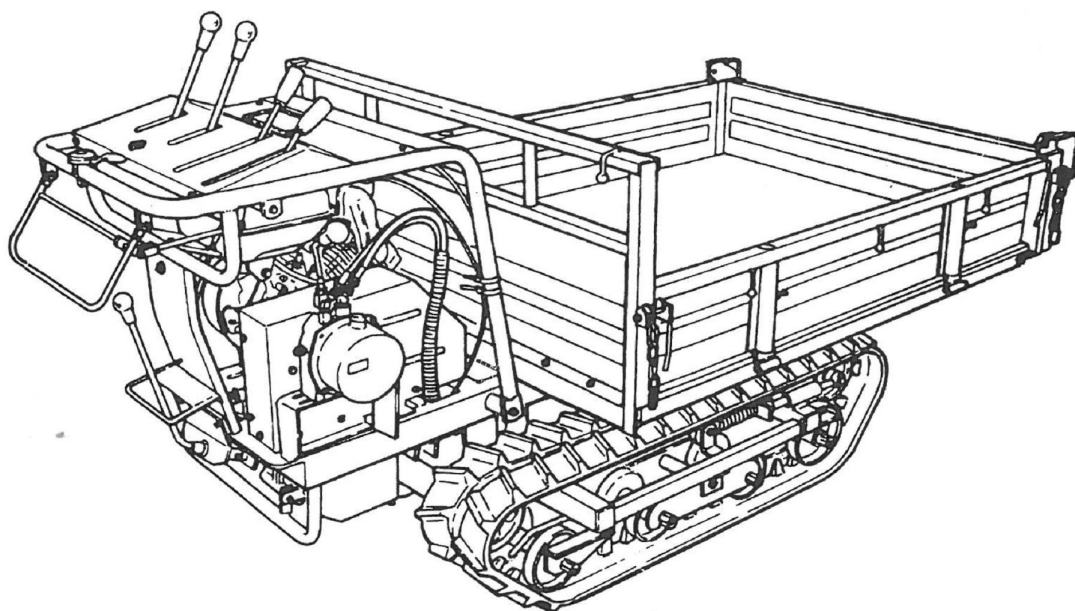
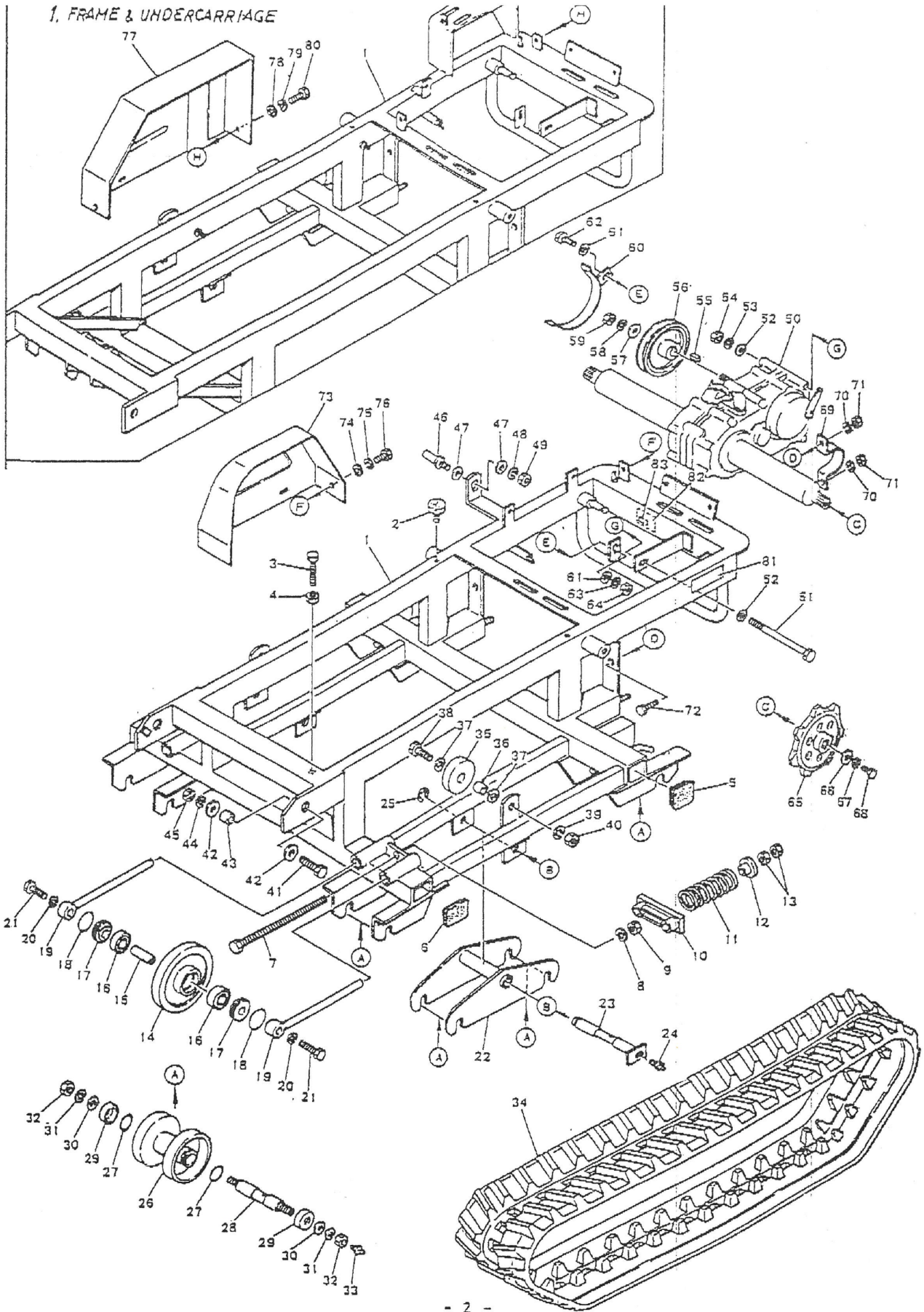


TRANSPORTER CINGOLATO MODELLO SC433LDA

ESPLOSO RICAMBI



1. FRAME & UNDERCARRIAGE

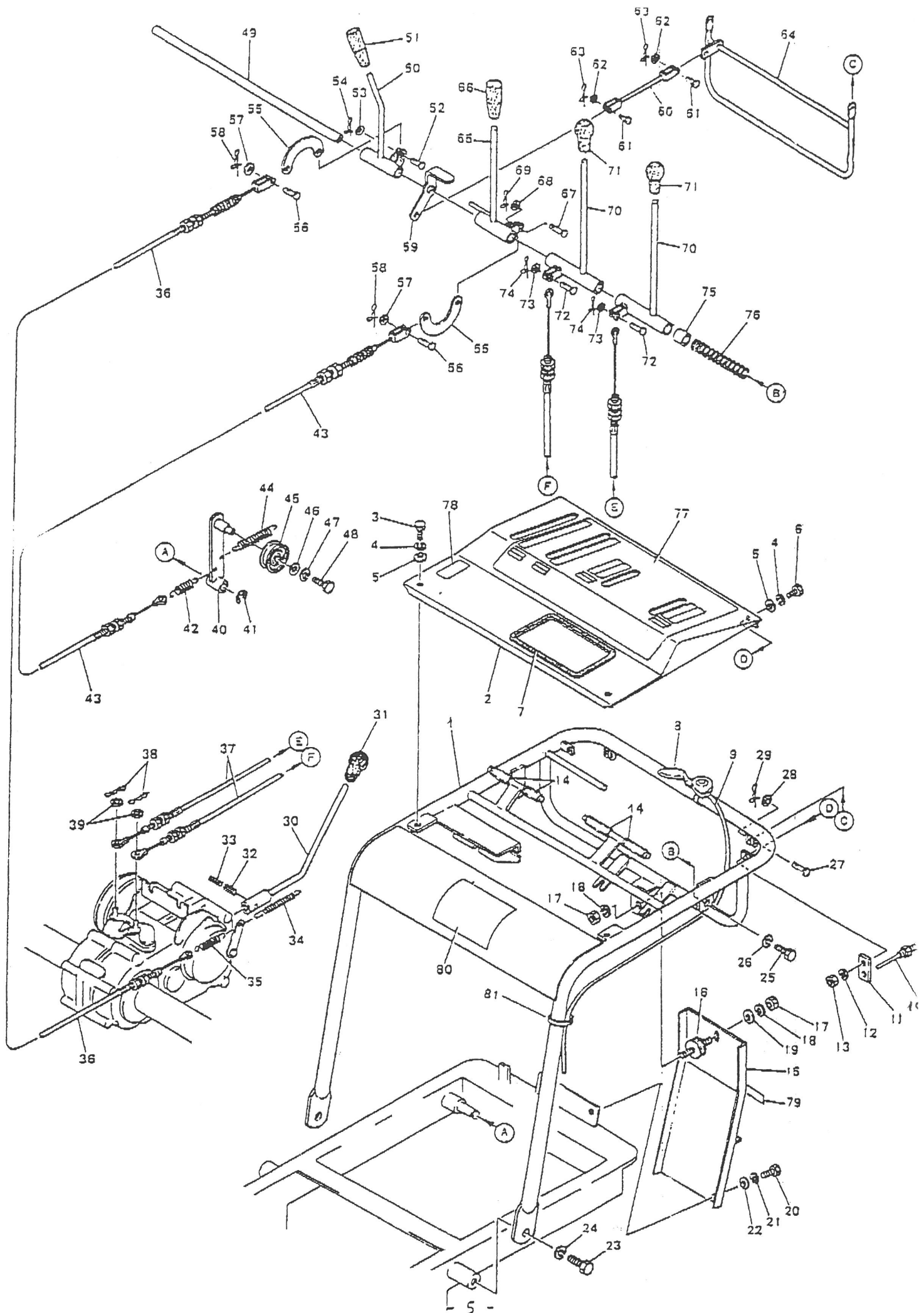


SC433DA LDA FRAME & UNDERCARRIAGE

RNO	Parts Code NO.	Parts Name	Remark	SC433DA Quantity	SC433DA Quantity	Retail Price
1-1	60850020000	Frame		1		
	60870020000	Frame			1	
1-2	6376512000	Cussion rubber		2	2	
1-3	0010109872	Bolt	M10x60	1	1	
1-4	0020100010	Nut	M10	1	1	
1-5	60850060000	Blinded tap	50x50x t3.2	2	2	
1-6	60850060100	Blinded tap	60x40x t3.2	2	2	
1-7	010000016250	Bolt	M16x250	2	2	
1-8	0027100016	Spring washer	M16	2	2	
1-9	0020100016	Nut	M16	2	2	
1-10	6331420000	Crawler tension metal		2	2	
1-11	60800020100	Spring		2	2	
1-12	60850120200	Collar		2	2	
1-13	0020100016	Nut	M16	2	2	
1-14	6331530000	Front idler		2	2	
1-15	6061540000	Front idler axle		2	2	
1-16	0040146204A	Bearing	#6204 (2NS)	4	4	
1-17	6066511000	Dust collar		4	4	
1-18	0062300450	O-ring	G45	4	4	
1-19	6061410000	Crawler tension rod		4	4	
1-20	0027100012	Spring washer	M12	4	4	
1-21	0010131245	Bolt	M12x45 IT	4	4	
1-22	60850120000	Spring arm		2	2	
1-23	60850120100	Shaft, spring arm		2	2	
1-24	0060660000	Grease nipple	1/4-28 UNF A	2	2	
1-25	0036300015	Stop ring	E15	2	2	
1-26	6061550000	Track roller		8	8	
1-27	0062100360	O-ring	P36	16	16	
1-28	60850160100M	Track collar axle →	60830160100 *433	8	8	8240528
1-29	6061591000	Dust cap		16	16	
1-30	0026100020	Plain washer	M20	16	16	
1-31	0027100020	Spring washer	M20	16	16	
1-32	0020200020	Nut	M20xP1.5	16	16	
1-33	0060660000	Grease nipple	1/4-28 UNF A	8	8	
3-34	6406203000	Rubber crawler	W200x35LxT2P	2	2	
3-35	6376520000	Roller	φ78	2	2	
1-36	6491040600	Roller axle		2	2	8240055
1-37	0026100014	Washer	M14	4	4	8240417
1-38	0010111445	Bolt	M8x45 (M14x45)	2	2	8240183
1-39	0027100014	Spring Washer	M8/M14	2	2	8240113
1-40	0020100014	Nut	M8/M14	2	2	8240184
1-41	0010111040	Bolt	M10x40 S45C 8T	2	2	
1-42	7082200000	Washer		4	4	

SC433DA LDA FRAME & UNDERCARRIAGE

R.NO	Parts Code NO.	Parts Name	Remark	SC433DA Quantity	SC433DA Quantity	Retail Price
1-43	60855220100	Collar		2	2	
1-44	0027100010	Spring washer	M10	2	2	
1-45	0020100010	Nut	M10	2	2	
1-46	6062070010	Dump hook hold screw		1		
1-47	0026100012	Plain washer	M12	2		
1-48	0027100012	Spring washer	M12	1		
1-49	0020100012	Nut	M12	1		
1-50	89990070	Transmission assy	CM64A1	1	1	
1-51	00101010160	Bolt	M10x160	1	1	
1-52	0026100010	Plain washer	M10	2	2	
1-53	0027100010	Spring washer	M10	1	1	
1-54	0020100010	Nut	M10	1	1	
1-55	0300000028	Key	5x5x35	1	1	
1-56	60850120300	Transmission pulley		1	1	
1-57	70822000000	Washer		1	1	
1-58	0027100010	Spring washer	M10	1	1	
1-59	0020100010	Nut	M10	1	1	
1-60	60850120400	Belt stopper		1	1	
1-61	0026100008	Plain washer	M8	2	2	
1-62	0100000015	Bolt	M8x25	1	1	
1-63	0027100008	Spring washer	M8	1	1	
1-64	0020100008	Nut	M8	1	1	
1-65	60300200000	Sprocket TT		2	2	
1-66	60302010000	Washer		2	2	
1-67	0027100010	Spring washer	M10	2	2	
1-68	0010101020	Bolt	M10x20	2	2	
1-69	55012300000	Hosing stay metal		2	2	
1-70	0027100012	Spring washer	M12	4	4	
1-71	0020100012	Nut	M12	4	4	
1-72	0100000042	Bolt	M12x35	2	2	
1-73	65065210000	Belt cover		1		
1-74	7022200010	Washer		3		
1-75	0027100008	Spring washer	M8	3		
1-76	0010100816	Bolt	M8x16	3		
1-77	60871120000	Cover belt			1	
1-78	0026100008	Plain washer	M8		3	
1-79	0027100008	Spring washer	M8		3	
1-80	0010100816	Bolt	M8x16		3	
1-81	6066020032	Sticker, model serial NO		1	1	
1-82	63160260000	Sticker, gear oil		1	1	
1-83	6036020031	Sticker, gear oil	2.02	1	1	



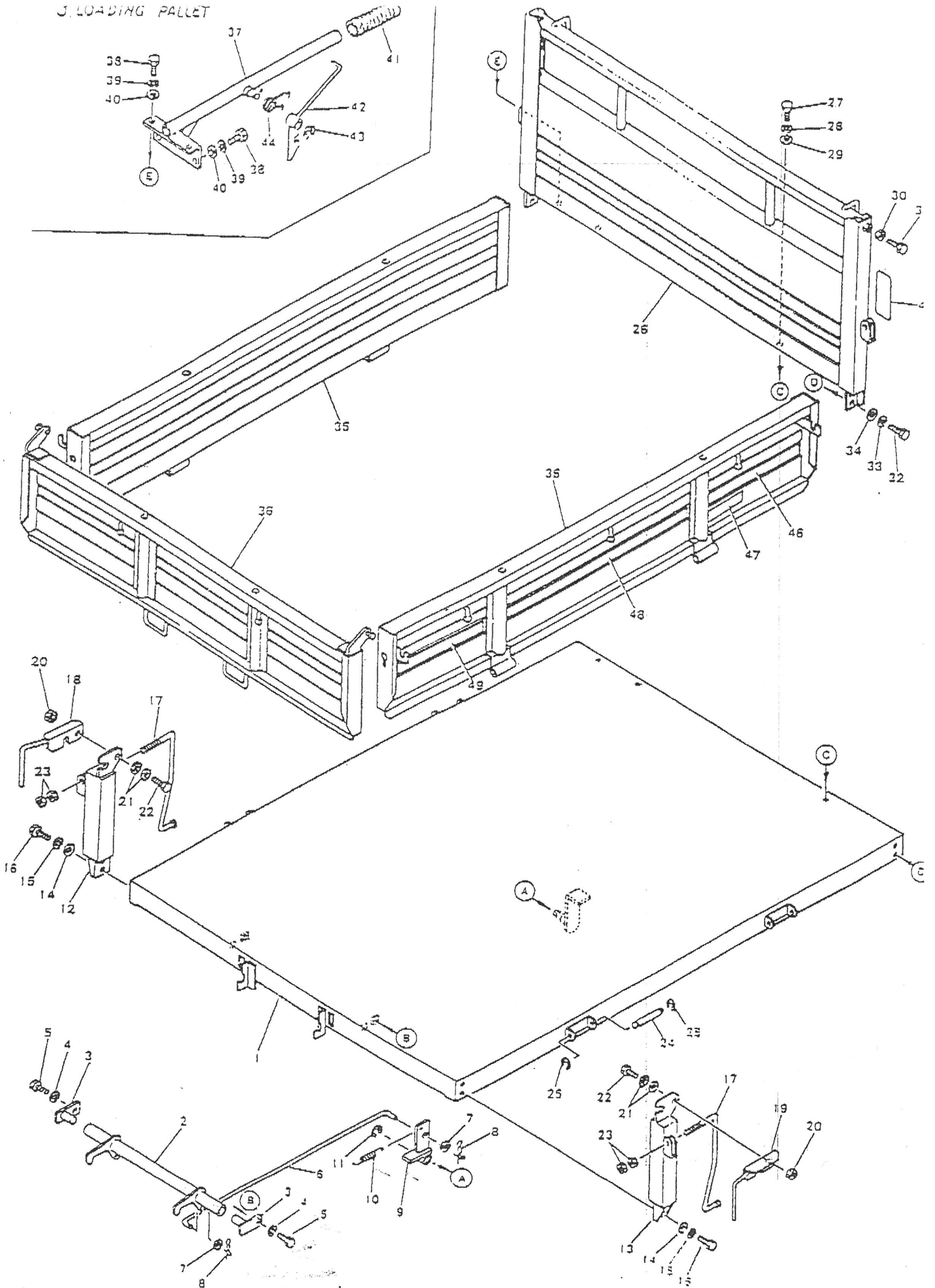
SCA33DA L D A OPERATION LEVERS

P. NO.	Part: Code NO.	Part: Name	Remark	SCA33DA Quantity	SCA33DA Quantity	Retail Price
2-1	60356020700	Handle		1	1	
2-2	60356020200	Plate lever guide		1	1	
2-3	0010100612	Bolt	M5x12	3	3	
2-4	0027100006	Spring washer	M5	4	4	
2-5	6056070000	Washer		4	4	
2-6	0010100625	Bolt	M5x25	1	1	
2-7	382-01984	Trim	2600	1	1	
2-8	6066132000	Throttle lever		1	1	
2-9	6066043000	Throttle wire	For GM181	1	1	
	6066043000	Throttle wire	For EH17	1	1	
	6066043000	Throttle wire	For GA160	1	1	
	7006044000	Throttle wire	For GH170	1	1	
2-10	6696044000	Choke wire	For EH17	1	1	
	6696044000	Choke wire	For GA160	1	1	
	6536040010	Choke wire	For GH170	1	1	
2-11	60852220100	Stay Choke wire	For EH17	1	1	
	60852220100	Stay Choke wire	For GA160	1	1	
	60852220100	Stay Choke wire	For GH170	1	1	
2-12	0027100006	Spring washer	M6 For EH17	1	1	
	0027100006	Spring washer	M6 For GA160	1	1	
	0027100006	Spring washer	M6 For GH170	1	1	
2-13	0020100006	Nut	M6 For EH17	1	1	
	0020100006	Nut	M6 For GA160	1	1	
	0020100006	Nut	M6 For GH170	1	1	
2-14	6085007095	Rubber hose	#9.5 x 250	4	4	
2-15	60856020100	Stay handle		1	1	
2-16	7908204000	Rubber vibration isolator		1	1	
2-17	0020100010	Nut	M10	2	2	
2-18	0027100010	Spring washer	M10	2	2	
2-19	0026100010	Plain washer	M10	1	1	
2-20	0010100816	Bolt	M8x16	2	2	
2-21	0027100008	Spring washer	M8	2	2	
2-22	0026100008	Plain washer	M8	2	2	

SCA 33 DA - LIDA OPEATION LEVEL:

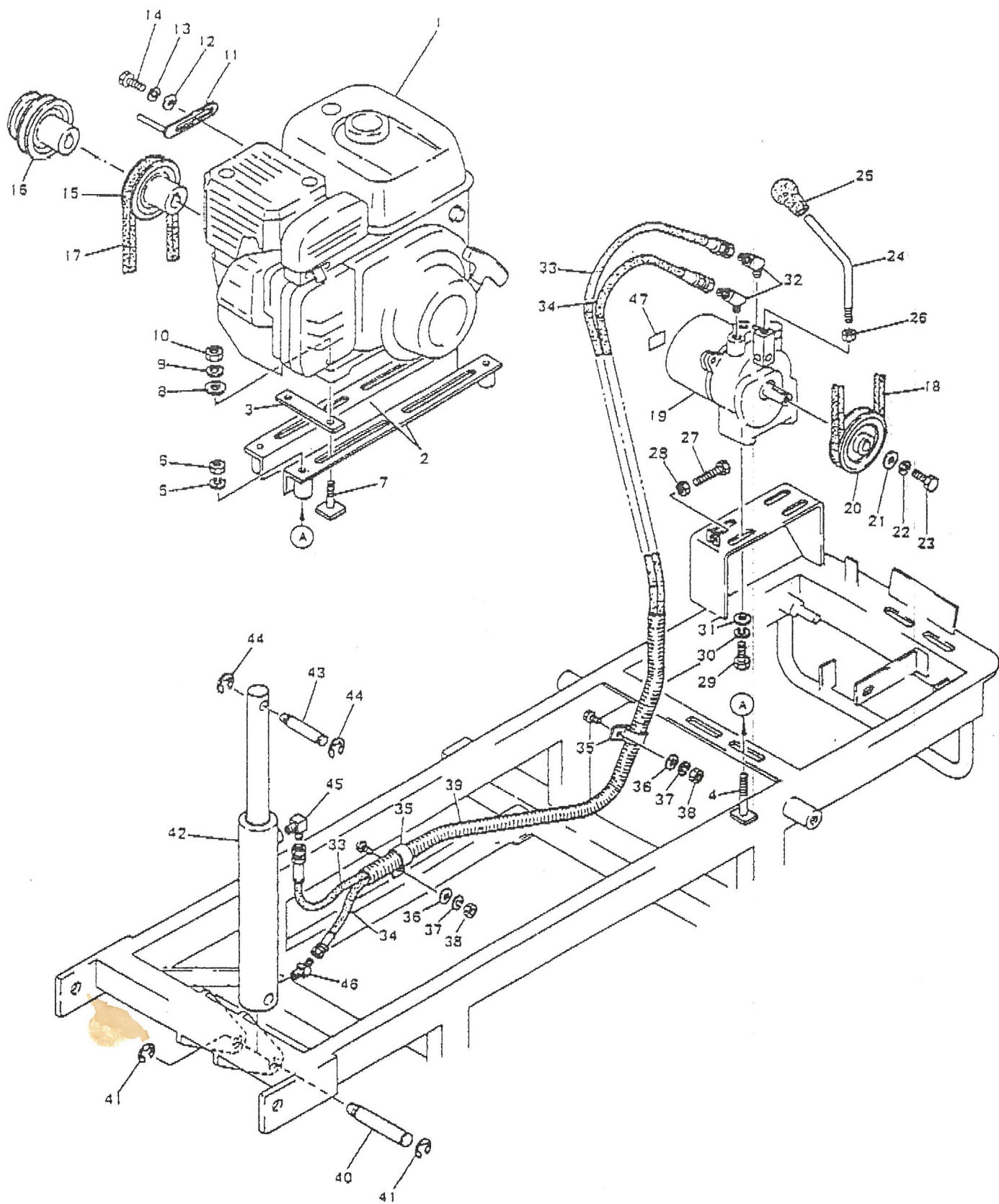
R.NO	Parts Code NO.	Parts Name	Remark	SCA33A Quantity	SCA33A Quantity	Petail Price
2-23	0010101025	Bolt	M10x25	2	2	
2-24	0027100010	Spring washer	M10	2	2	
2-25	0010100816	Bolt	M8x16	2	2	
2-26	0027100008	Spring washer	M8	2	2	
2-27	6065020000	Pin	φ6x19 (15)	2	2	
2-28	0026100006	Plain washer	M6	2	2	
2-29	0031199006	Pin with stopper	φ6	2	2	
2-30	60850120500	Lever		1	1	
2-31	6036030000	Grip	φ14	1	1	
2-32	0030300525	Spring pin	φ5x25	1	1	
2-33	0030300325	Spring pin	φ3x25	1	1	
2-34	6062104000	Spring		1	1	
2-35	6062105000	Spring		1	1	
2-36	60856050200	Wire, brake		1	1	
2-37	60856050000	Wire, side clutch		2	2	
2-38	0031199006	Pin with stopper	φ6	2	2	
2-39	0026100006	Plain washer	M6	2	2	
2-40	60856020600	Tension arm		1	1	
2-41	0036800012	Stop ring	Ø12	1	1	
2-42	6062105000	Spring		1	1	
2-43	60856060100	Wire, traction		1	1	
2-44	6062104020	Spring		1	1	
2-45	6066110000	Tension pulley	55T	1	1	
2-46	6066070000	Washer		1	1	
2-47	0027100006	Spring washer	M6	1	1	
2-48	0010100614	Bolt	M6x14	1	1	
2-49	5502150000	Shaft		1	1	
2-50	60856020600	Lever brake		1	1	
2-51	6066030020	Grip	φ9.5	1	1	
2-52	6085080000	Pin	φ6x19 (15)	1	1	
2-53	0026100006	Plain washer	M6	1	1	
2-54	0031199006	Pin with stopper	φ6	1	1	
2-55	2737220010	Rod		2	2	
2-56	6066080000	Pin	φ6x19 (15)	2	2	
2-57	0026100006	Plain washer	M6	2	2	
2-58	0031199006	Pin	φ6	2	2	
2-59	60856420000	Bracket, safety B		1	1	
2-60	60856420100	Rod, safety		1	1	
2-61	6066080000	Pin	φ6x19 (15)	2	2	
2-62	0026100006	Plain washer	M6	2	2	
2-63	0031199006	Pin with stopper	φ6	2	2	
2-64	6564246000	Safety device metal A		1	1	
2-65	60856020400	Lever traction		1	1	

J. LOADING PALLET



S C 4 3 3 D A L D A LOADING PALLET

P.NO	Parts Code NO.	Parts Name	Remark	SOLKIM Quantity	SOLKIM Quantity	Retail Price
3-1	60855220000	Loading Pallet		1		
	60875220000	Loading Pallet			1	
3-2	60855220900	Hook, Front Door		1	1	
3-3	60855221000	Pin, Hook		2	2	
3-4	00271000008	Spring washer	M8	2	2	
3-5	0010100820	Bolt	M8x20	2	2	
3-6	6402394000	Rod, Hook		1		
	6372394020	Rod, Hook			1	
3-7	00261000008	Plain washer	M8	2	2	
3-8	00311990008	Pin with stopper	#8.	2	2	
3-9	63722500000	Pallet support metal		1	1	
3-10	6062104000	Spring		1	1	
3-11	0036800012	Stop ring	E12	1	1	
3-12	60855220600	Support RH		1	1	
3-13	60855220700	Support LH		1	1	
3-14	00261000008	Plain washer	M8	4	4	
3-15	00271000008	Spring washer	M8	4	4	
3-16	0010100816	Bolt	M8x16	4	4	
3-17	60855220800	Hook		4	4	
3-18	6062391000	Hook, upper support RH		1	1	
3-19	6062391010	Hook, upper support LH		1	1	
3-20	00201000008	Nut	M8	2	2	
3-21	02650000008	Coped disc spring	M8	4	4	
3-22	0100000015	Bolt	M8x25	2	2	
3-23	0020100010	Nut	M10	8	8	
3-24	60855220400	Pin, door support		4	4	
3-25	00368000006	Stop ring	E6	8	8	
3-26	60855224200	Rear wall		1	1	
3-27	0010100820	Bolt	M8x20	1	3	
3-28	00271000008	Spring washer	M8	1	3	
3-29	00261000008	Plain washer	M8	1	3	
3-30	00201000008	Nut	M8	2	2	
3-31	0010100820	Bolt	M8x20	2	2	
3-32	0010100816	Bolt	M8x16	4	4	
3-33	00271000008	Spring washer	M8	4	4	
3-34	00261000008	Plain washer	M8	4	4	
3-35	60855220300	Side door		2	2	
3-36	60855220500	Front door		1	1	
3-37	60855221100	Stay dump		1		
3-38	0100000015	Bolt	M8x25	4		
3-39	00271000008	Spring washer	M8	4		
3-40	00261000008	Plain washer	M8	4		
3-41	6066030000	Grip	#27	1		

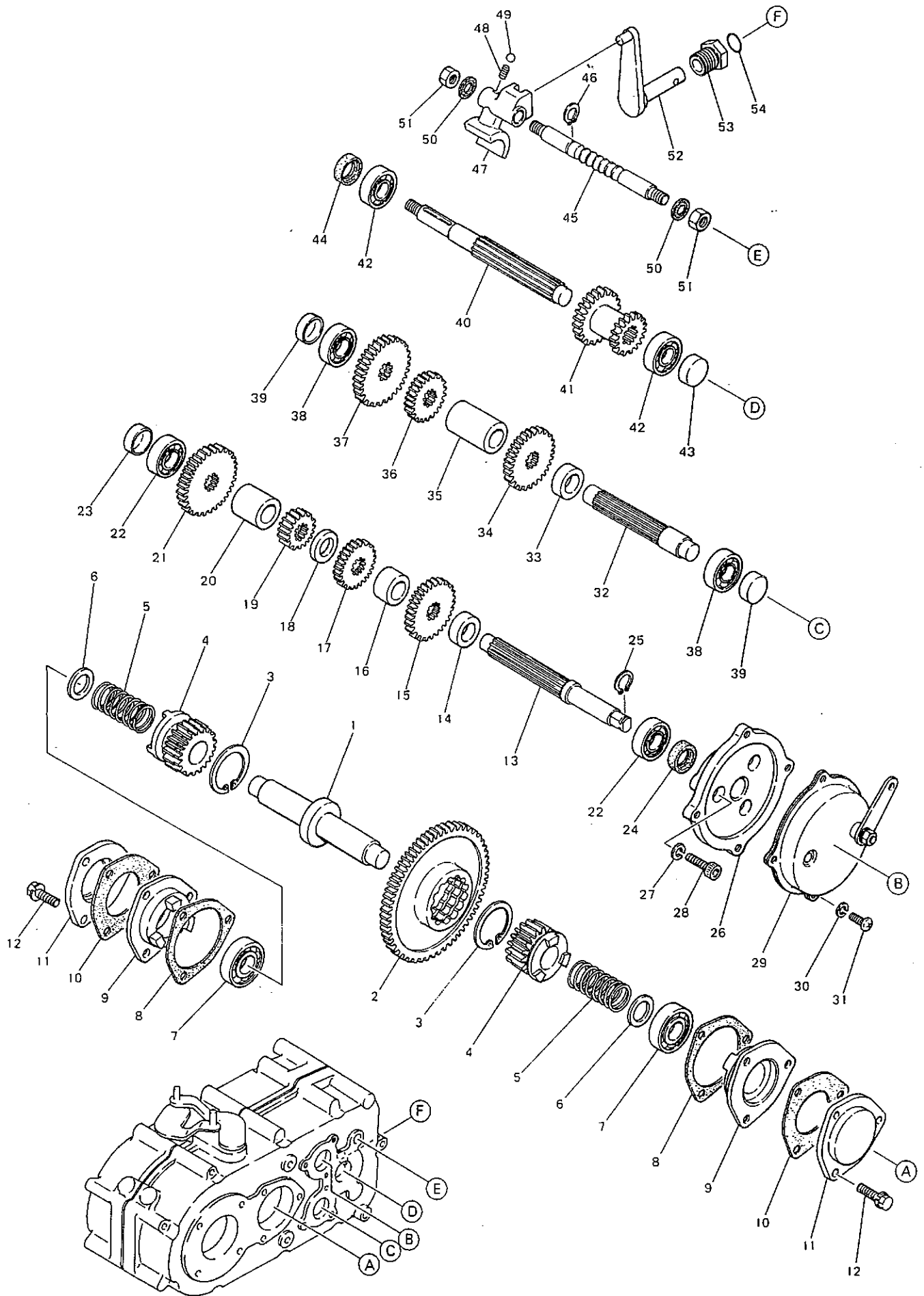


SC433DA L D A ENGINE, HYDRAULIC STM

R. NO.	Parts Code NO.	Parts Name	Remark	SC433DA Quantity	SC433DA Quantity	Retail Price
4-1	61502260000	Engine	Mitsubishi GM181LN	1	1	
	60832260000	Engine	Robin EH170B	1	1	
	60812260000	Engine	Yanmar GA160	1	1	
	61502260200	Engine	Kubota GH170	1	1	
4-2	6032290001	Engine Base	For GM181LN	1	1	
	60852220000	Engine Base	For EH17B	1	1	
	6032290001	Engine Base	For GA160	1	1	
	60852220200	Engine Base	For GH170	1	1	
4-3	6012720000	Washer	For GM181LN	2	2	
	6012720000	Washer	For GA160	2	2	
4-4	6332072000	Fix Bolt		4	4	
4-5	0027100010	Spring Washer	M10	4	4	
4-6	0020100010	Nut	M10	4	4	
4-7	6314072000	Fix Bolt	For GM181LN	4	4	
	6314072000	Fix Bolt	For EH17B	4	4	
	6314072000	Fix Bolt	For GA160	4	4	
	7442070000	Fix Bolt	For GH170	2	2	
4-8	0026100008	Plain Washer	M8	4	4	
4-9	0027100008	Spring Washer	M8	4	4	
4-10	0020100008	Nut	M8	4	4	
4-11	6152370000	Belt Stopper		2	2	
4-12	0026100008	Plain Washer	M8	2	2	
4-13	0027100008	Spring Washer	M8	2	2	
4-14	0010100815	Bolt	M8 x 15	2	2	
4-15	6502302000	Engine Pulley		1		
4-16	6522302000	Engine Pulley			1	
4-17	0080300034	V-Belt	B34 For GM181LN	1	1	
	0080300036	V-Belt	B36 For EH17B	1	1	
	0080300034	V-Belt	B34 For GA160	1	1	
	0080300036	V-Belt	B36 For GH170	1	1	
4-18	0080200021	V-Belt	A21 For GM181LN		1	
	0080200022	V-Belt	A22 For EH17B		1	
	0080200021	V-Belt	A21 For GA160		1	
	0080200019	V-Belt	A19 For GH170		1	
4-19	6376161000	Hydraulic Package	PPH1.7AC		1	
4-20	6372305000	Pulley, Hydraulic			1	
4-21	7082200000	Washer			1	

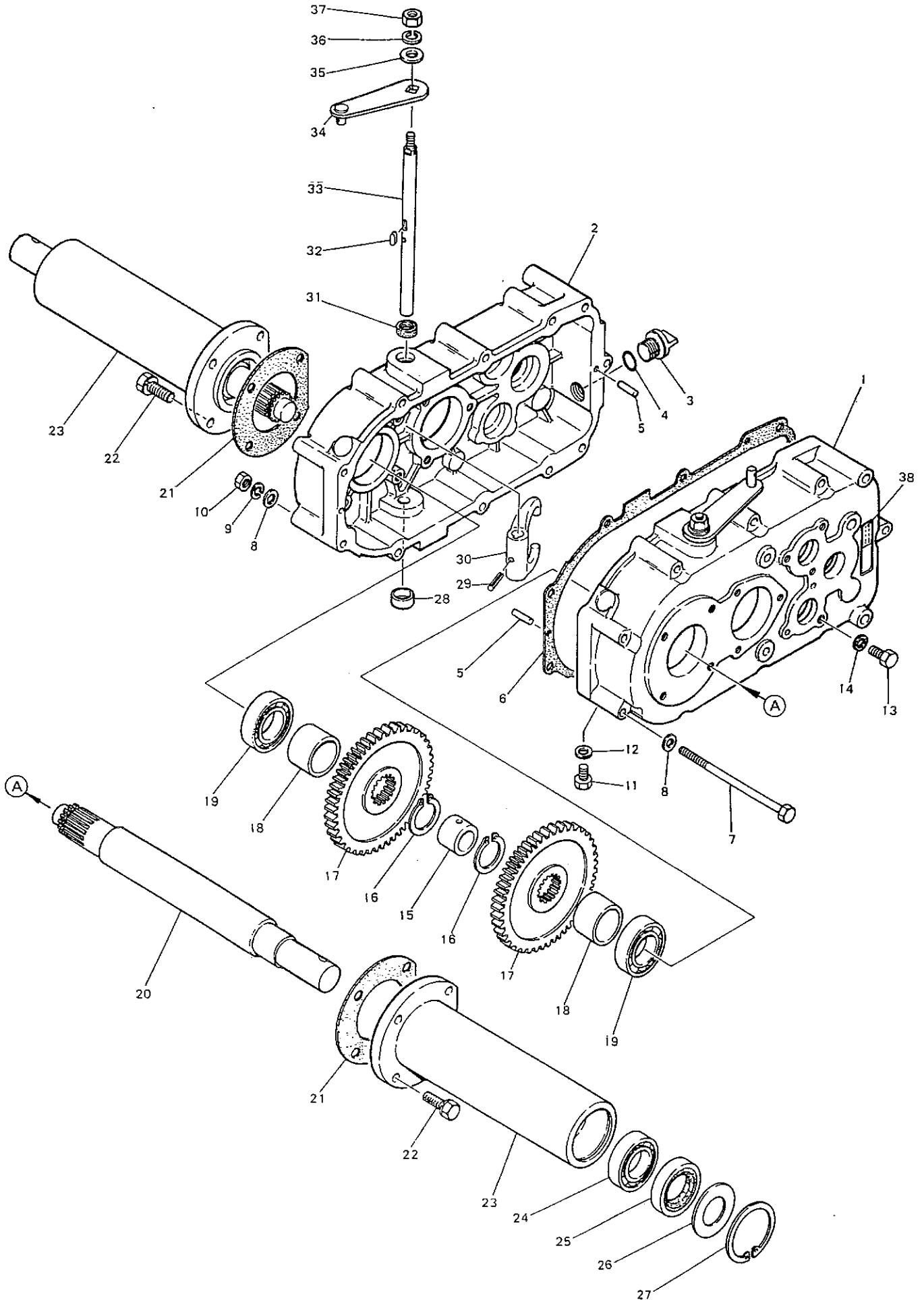
C M 6 4 A 1 TRANSMISSION (1)

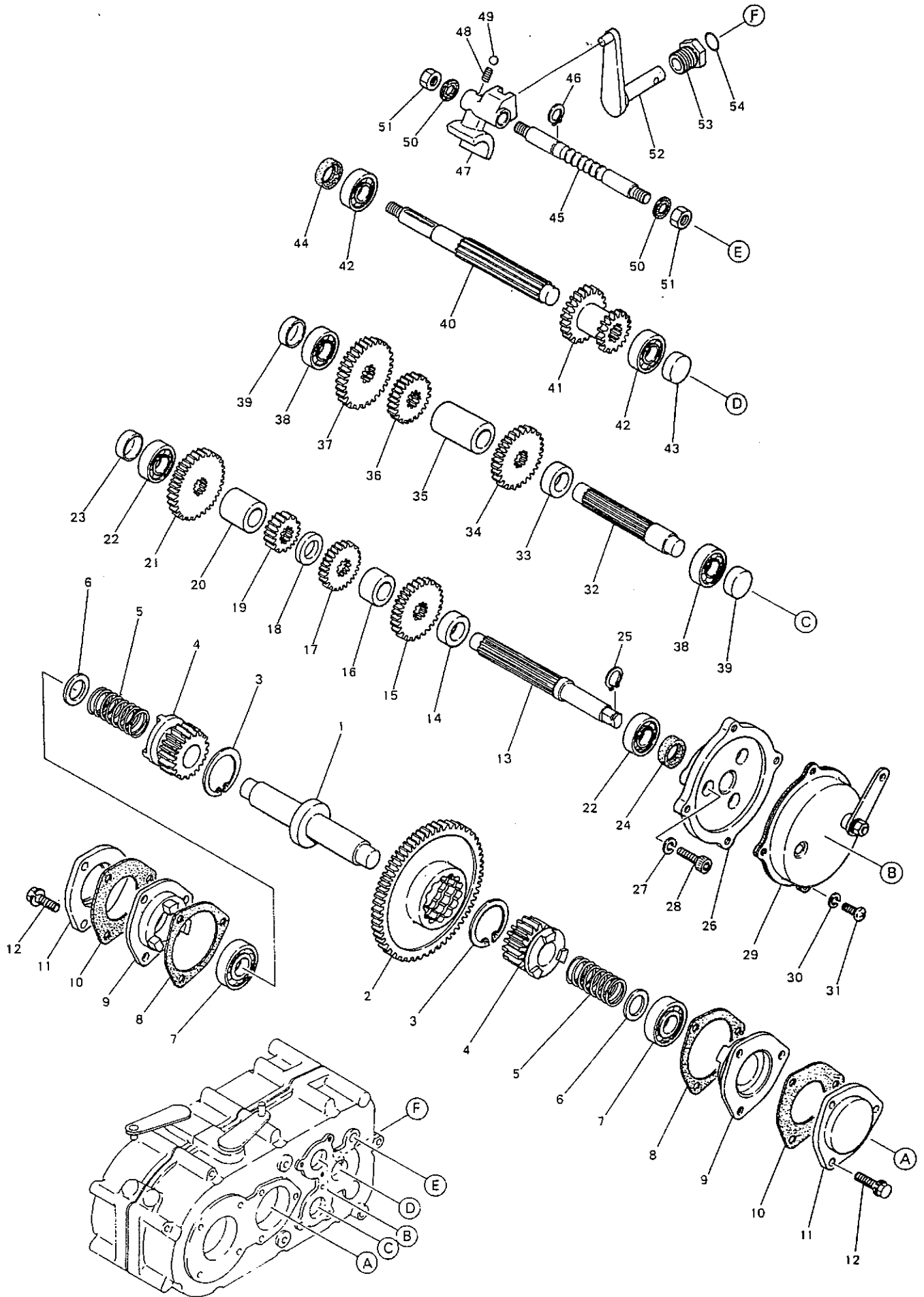
Dwg Nos	Parts Nos.	Parts Names	Qty	Standard		
1-1	89997020200	Transmission Case (R)	1			
1-2	89997020300	Transmission Case (L)	1			
1-3	89997060200	Refueling Plug(W/out hole)	1			
1-4	0052100180	O-Ring	1	P18		
1-5	0030500520	Pin	2	∅5×20		
1-6	89997060000	Packing	1			
1-7	00101008130	Bolt	5	M8×130		
1-8	0026100008	Flat Washer	14	M8		
1-9	0027100008	Spring Washer	5	M8		
1-10	0020100008	Nut	5	M8		
1-11	0010100812	Bolt	1	M8×12		
1-12	0025100008	Seal Washer	1	M8		
1-13	0010100816	Bolt	1	M8×16		
1-14	0025100008	Seal Washer	1	M8		
1-15	89997920000	Bracket (for Wire)	1			
1-16	00101008130	Bolt	2	M8×130		
1-17	0027100008	Spring Washer	2	M8		
1-18	0020100008	Nut	2	M8		
1-19	89997620200	Collar A (Axle Center)	1			
1-20	0036100030	Stop Ring	2	S30		
1-21	89997620100	Axle Gear 47T	2			
1-22	89997620300	Collar B (Axle)	2			
1-23	0040106006A	Bearing	2	#6006		
1-24	89997620000	Axle	2			
1-25	89997660000	Packing (Axle Case)	2			
1-26	00105001025	SEMS Screw	8	M10×25		
1-27	89997620400	Axle Case	2			
1-28	0040106006A	Bearing	2	#6006		
1-29	0600305512	Oil Seal	2	UE305512		
1-30	89997620500	Cover (Oil Seal)	2			
1-31	0036500055	Stop Ring	2	R55		
1-32	NOKEZ0025B0	Blind Cap	2	NOK E Z 0 0 2 5 B 0		
1-33	0030300420	Spring Pin	2	∅4×20		
1-34	89997520800	Clutch Fork (Side Clutch)	2			
1-35	0600012227	Oil Seal	2	UE12227		
1-36	0300004412	Speel	2	4×4×12		
1-37	89997520700	Fork Shaft (Side Clutch)	2			
1-38	89997520900	Clutch Lever	2			
1-39	0026100008	Flat Washer	2	M8		
1-40	0027100008	Spring Washer	2	M8		
1-41	0020300008	Nut	2	M8		
1-42	89997060100	Serial Number Plate	1			



C M 6 4 A 1 TRANSMISSION (2)

Dwg Nos	Parts Nos.	Parts Names	Qty	Standard		
2-1	89997520000	Side Clutch Shaft	1			
2-2	89997520100	Side Clutch Gear 61T	1			
2-3	0036500042	Stop Ring	2	R42		
2-4	89997520200	Side Clutch Gear 17T	2			
2-5	89997520600	Spring (Clutch Shaft)	2			
2-6	89997520500	Collar H (Clutch Shaft)	2			
2-7	0040106004	Bearing	2	#6004		
2-8	89997560000	Packing A (Clutch Cover)	2			
2-9	89997520300	Clutch Claw	2			
2-10	89997560100	Packing B (Clutch Cover)	2			
2-11	89997520400	Cover (Clutch Shaft)	2			
2-12	0010500825	SEMS Screws	6	M8x25		
2-13	89997220000	Brake Shaft	1			
2-14	89997220100	Collar C (Brake Shaft)	1			
2-15	89997220200	Low Gear 27T	1			
2-16	89997220300	Collar D (Brake Shaft)	1			
2-17	89997220400	2nd Gear 20T	1			
2-18	89997220500	Collar E (Brake Shaft)	1			
2-19	89997220600	2nd Gear 15T	1			
2-20	89997220700	Collar F (Brake Shaft)	1			
2-21	89997220800	2nd Gear 31T	1			
2-22	0040106003A	Bearing	2	#6003		
2-23	NOKEZ0036A0	Blind Cap	1	NOK EZ0036A0		
2-24	0600017287	Oil Seal	1	UE17287		
2-25	0036100015	Stop Ring	1	S15		
2-26	89997220900	Brake Holder	1			
2-27	0027100006	Spring Washer	3	M6		
2-28	0010700625	Cap Screw	3	M6x25		
2-29	89997260000	Brake Assy	1			
2-30	0027100006	Spring Washer	4	M6		
2-31	0015100614	Pan Head Screw	4	M6x14		
2-32	89997320000	Back Shaft	1			
2-33	89997220100	Collar C (Brake Shaft)	1			
2-34	89997220200	Low Gear 27T	1			
2-35	89997320100	Collar G (Back Shaft)	1			
2-36	89997320200	Back Gear 20T	1			
2-37	89997320300	Back Gear 30T	1			
2-38	0040106003A	Bearing	2	#6003		
2-39	NOKEZ0036A0	Blind Cap	2	NOK EZ0036A0		
2-40	89997120000	Input Shaft	1			
2-41	89997120100	Input Gear 25T/18T	1			
2-42	0040106003A	Bearing	2	#6003		
2-43	NOKEZ0036A0	Blind Cap	1	NOK EZ0036A0		
2-44	0600017287	Oil Seal	1	UE17287		





C M 6 4 A 3 TRANSMISSION (2)

Dwg NOS	Parts Nos.	Parts Names				
2-1	89997520000		1			
2-2	89997520100		1			
2-3	0036500042		2	R 4 2		
2-4	89997520200		2			
2-5	89997520600		2			
2-6	89997520500		2			
2-7	0040106004		2	#6004		
2-8	89997560000		2			
2-9	89997520300		2			
2-10	89997560100		2			
2-11	89997520400		2			
2-12	0010500825		6	M8×25		
2-13	89997220000		1			
2-14	89997220100		1			
2-15	89997220200		1			
2-16	89997220300		1			
2-17	89997220400		1			
2-18	89997220500		1			
2-19	89997220600		1			
2-20	89997220700		1			
2-21	89997220800		1			
2-22	0040106003A		2	#6003		
2-23	NOKEZ0036A0		1	NOK EZ0036A0		
2-24	0600017287		1	UE17287		
2-25	0036100015		1	S15		
2-26	89997220900		1			
2-27	0027100006		3	M6		
2-28	0010700630		3	M6×30		
2-29	89997260000		1			
2-30	0027100006		4	M6		
2-31	0015100614		4	M6×14		
2-32	89997320000		1			
2-33	89997220100		1			
2-34	89997220200		1			
2-35	89997320100		1			
2-36	89997320200		1			
2-37	89997320300		1			
2-38	0040106003A		2	#6003		
2-39	NOKEZ0036A0		2	NOK EZ0036A0		
2-40	89997120000		1			
2-41	89997120100		1			
2-42	0040106003A		2	#6003		
2-43	NOKEZ0036A0		1	NOK EZ0036A0		
2-44	0600017287		1	UE17287		

EC500 (SC433LDA) CRAWLER CARRIER
RECOMMENDED PARTS

Item No.	Parts Code No.	Parts Name	Q'ty	Retail Price
	633153 ASSY	Front Idler Assy	2	
1-14	6331530000	Front Idler	2	
1-15	6061540000	Axis, Front Idler	2	
1-16	0040146204A	Bearing	4	
1-17	6066511000	Dust Collar	4	
1-18	0052300450	O-Ring	4	
1-20	0027100012	Spring Washer	4	
1-21	0010131245	Bolt	4	
	606155 ASSY	Track Roller Assy	8	
1-26	6061550000	Track Roller	8	
1-27	0052100360	O-Ring	16	
1-28	6061560000	Axis, Track Roller	8	
1-29	6061591000	Dust Cap	16	
1-30	0026100020	Plain Washer	16	
1-31	0027100020	Spring Washer	16	
1-32	0020200020	Nut	16	
1-33	0060660000	Grease Nipple	8	
3-34	6406203000	Rubber Crawler	2	
3-35	6376520000	Roller	2	
1-50	899900070	Transmission Assy	1	
1-56	60850120300	Pulley, Transmission	1	
1-65	6030020000	Sprocket	2	
2-8	6066132000	Throttle Lever	1	
2-9	6066043000	Throttle Wire	1	
2-36	60856060200	Wire, Brake	1	
2-37	60856060000	Wire Side Clutch	2	
2-43	60856060100	Wire, Traction	1	
2-45	6066110000	Tension Pulley	1	
4-16	6522302000	Pulley, Engine	1	
4-17	0080300034	V-Belt	1	
4-18	0080200021	V-Belt	1	
4-19	6376161000	Hydraulic Package	1	
4-33	6786480000	Hydraulic Hose	1	
4-34	6396164010	Hydraulic Hose	1	